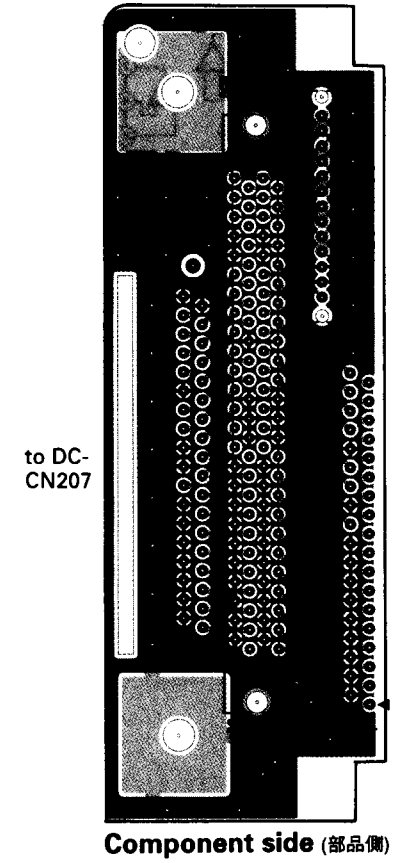
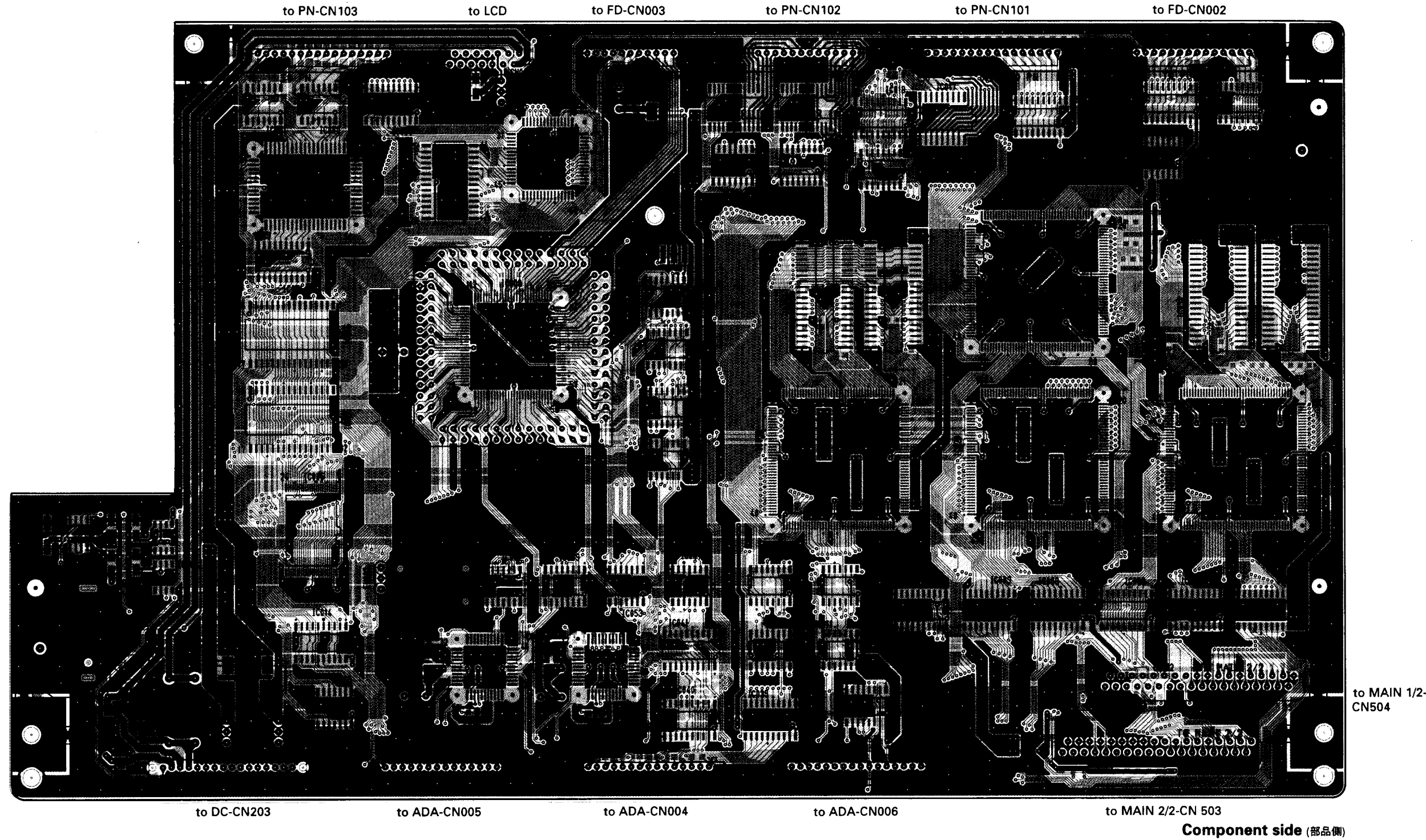


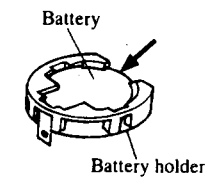
• MAIN 2/2 Circuit Board



• MAIN 1/2 Circuit Board

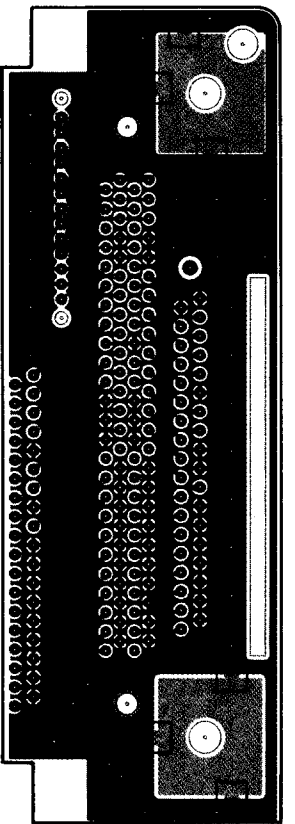
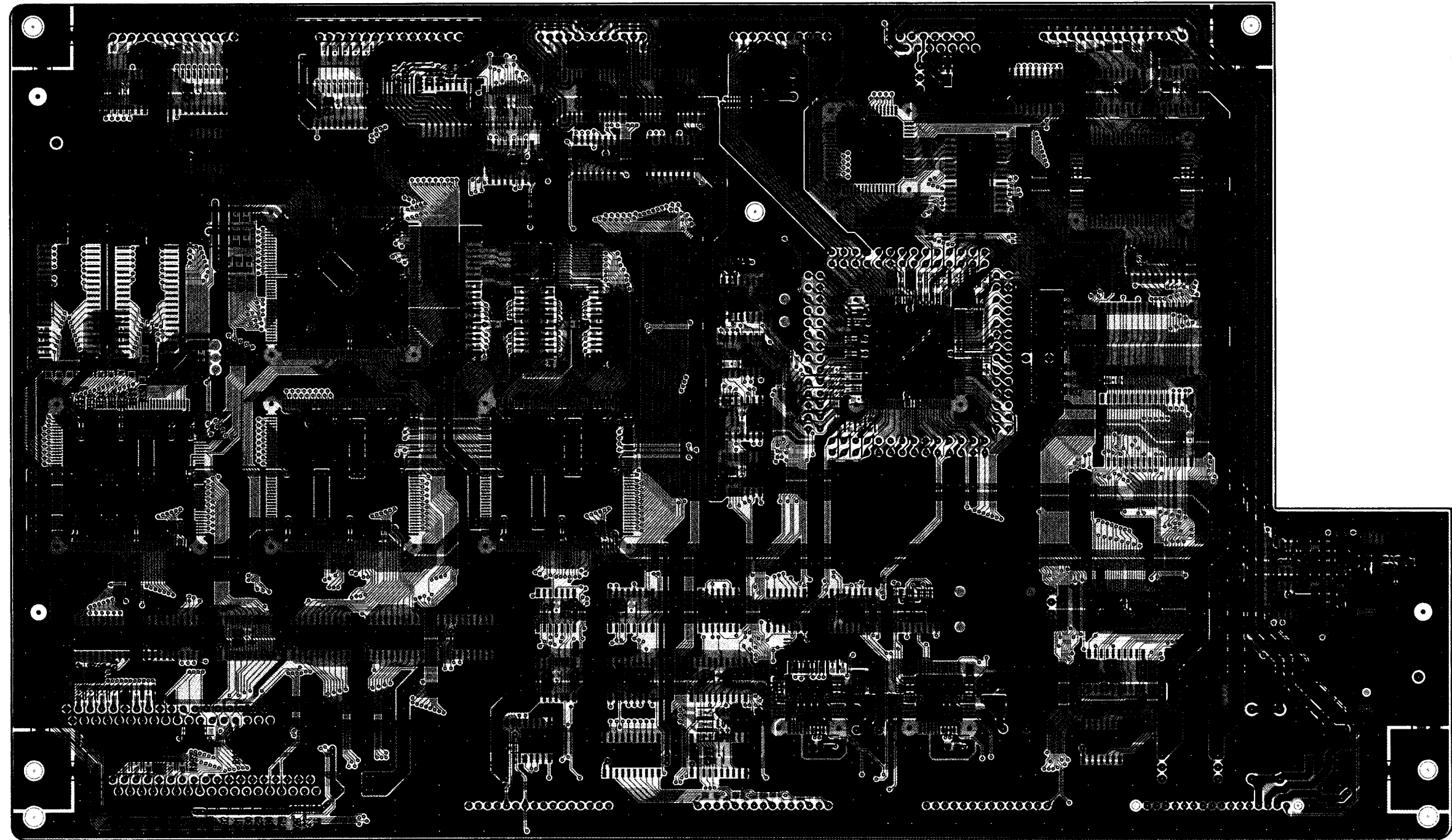


- Notice for back-up battery removal  
Push the battery as shown in figure, then the battery will pop up.
- Druk de batterij naar beneden zoals aangeven in de tekening, de batterij springt dan naar voren.



• MAIN 1/2 Circuit Board

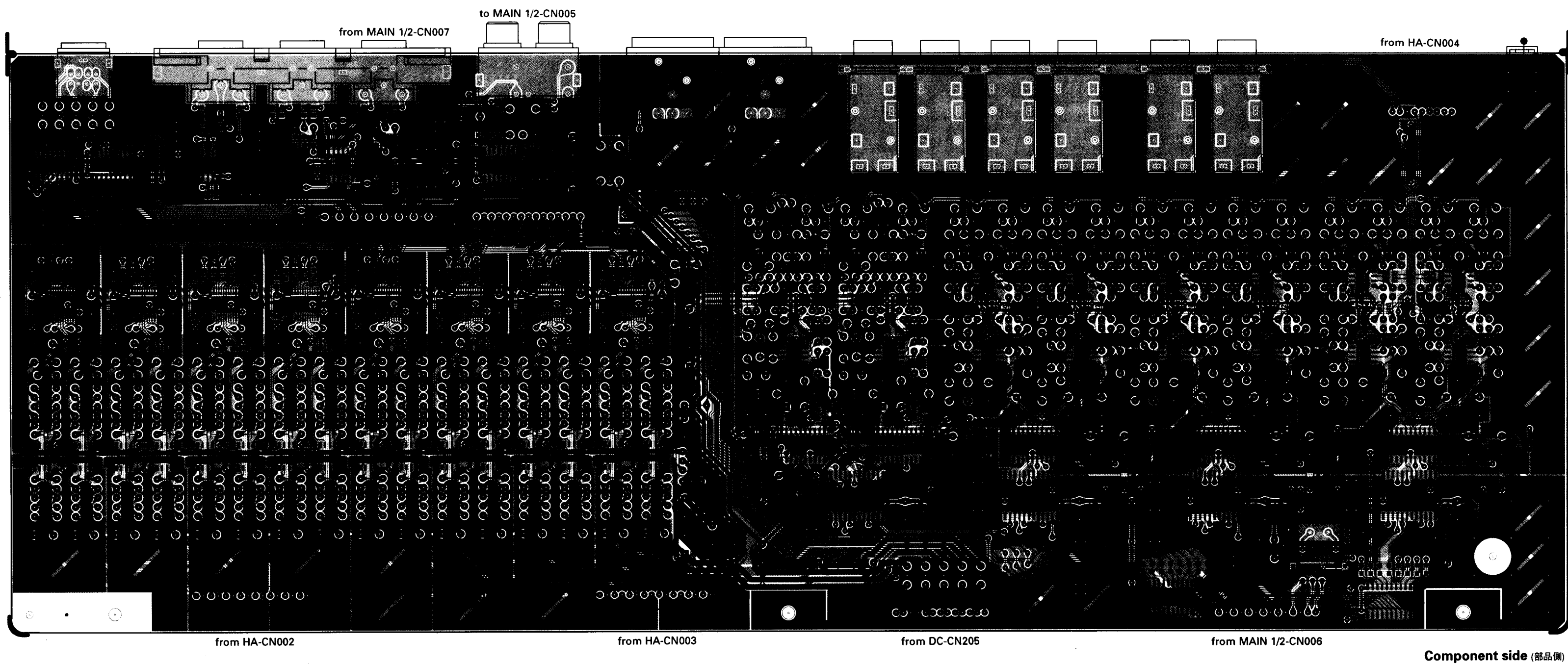
• MAIN 2/2 Circuit Board



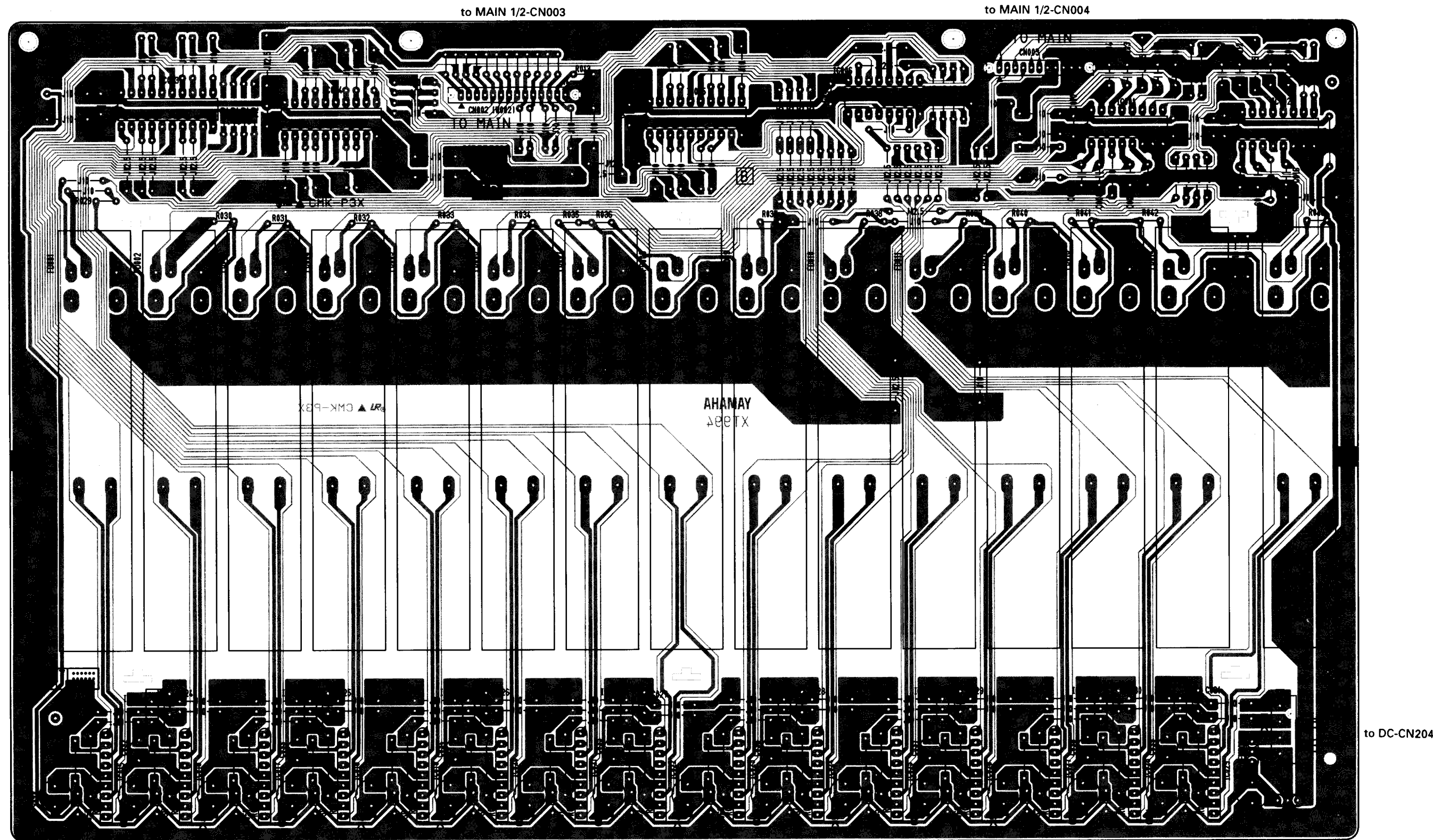
Component side (部品側)

Component side (部品側)

• ADA Circuit Board



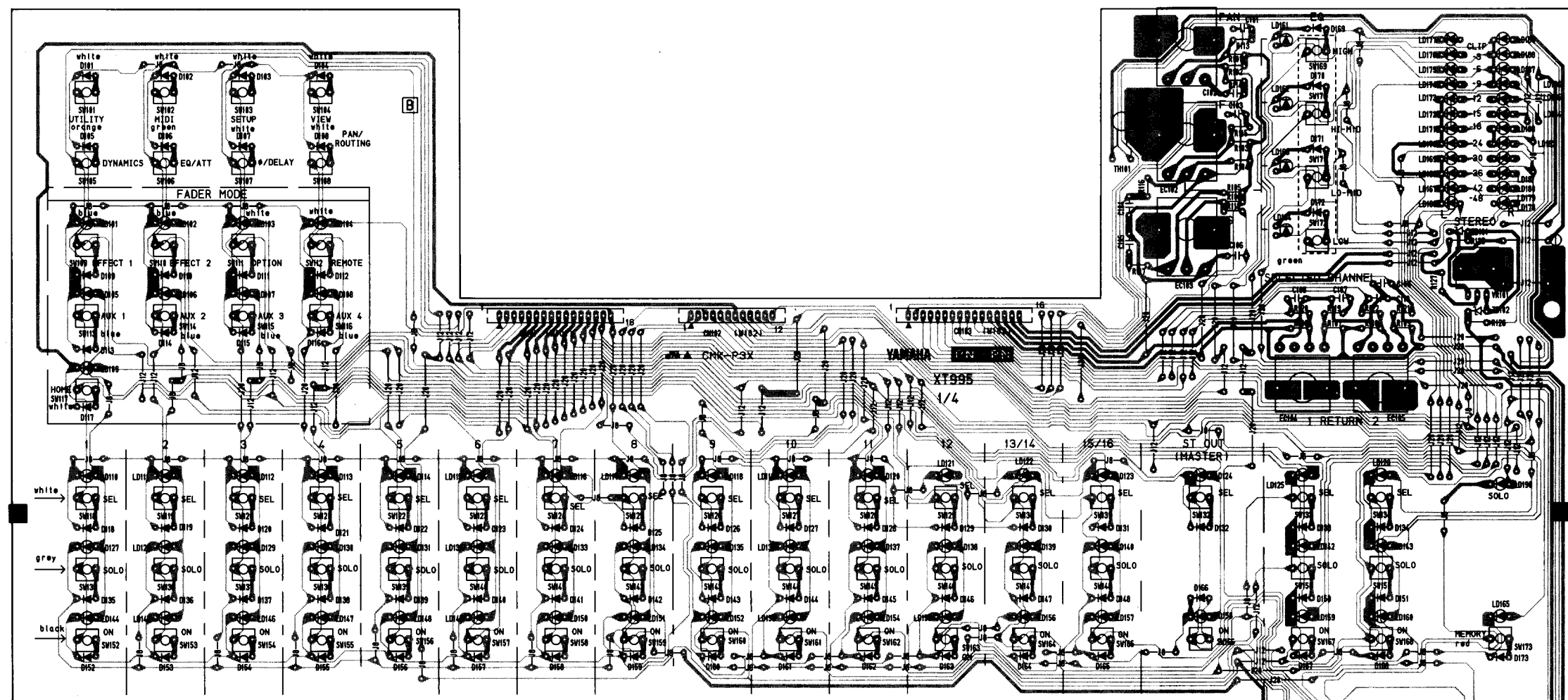
• FD Circuit Board



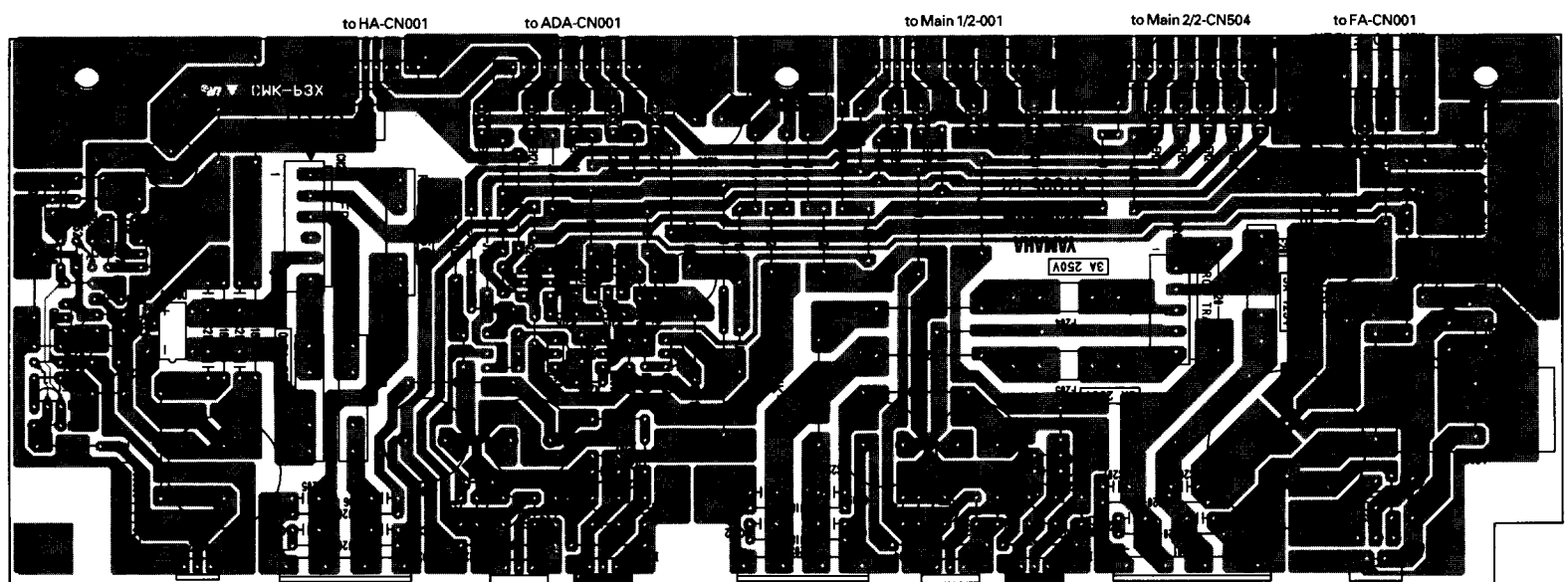
Component side (部品側)



● PN-PN Circuit Board (Japanese, U.S and Canadian models)

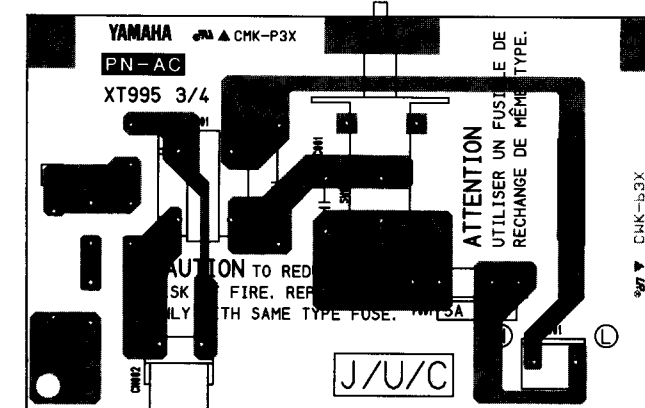


● PN-DC Circuit Board (Japanese, U.S and Canadian models)



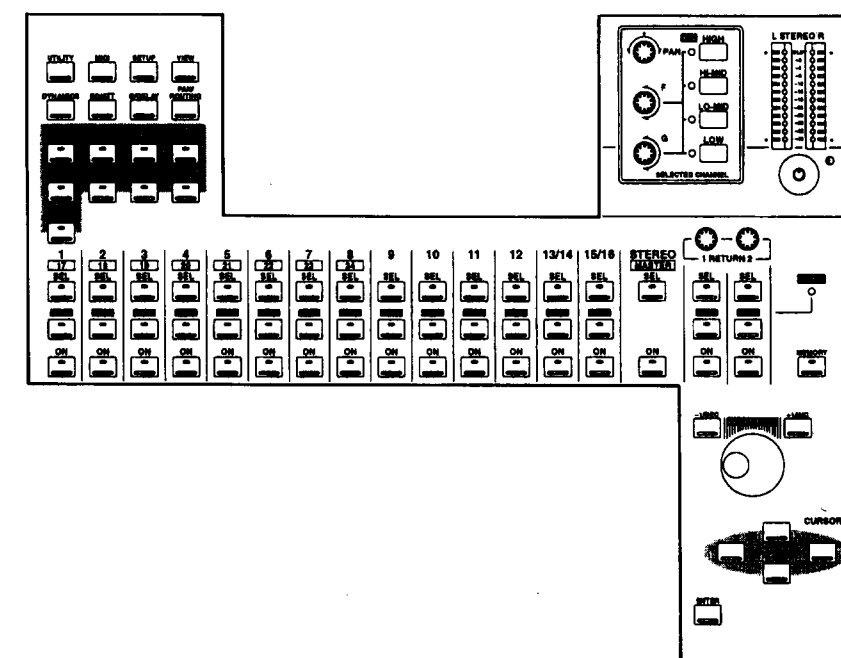
Component side (部品側)

● PN-AC Circuit Board (Japanese, U.S and Canadian models)

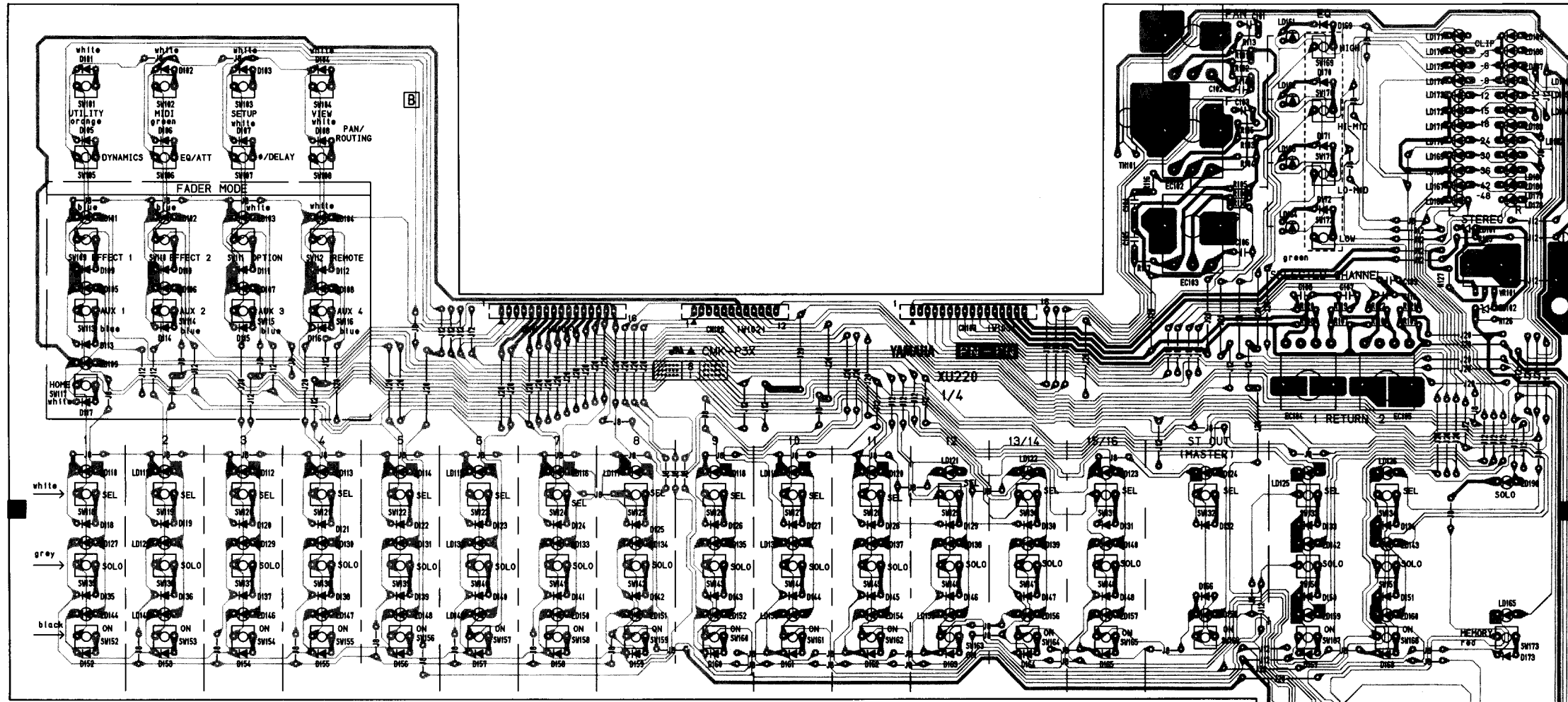


Component side (部品側)

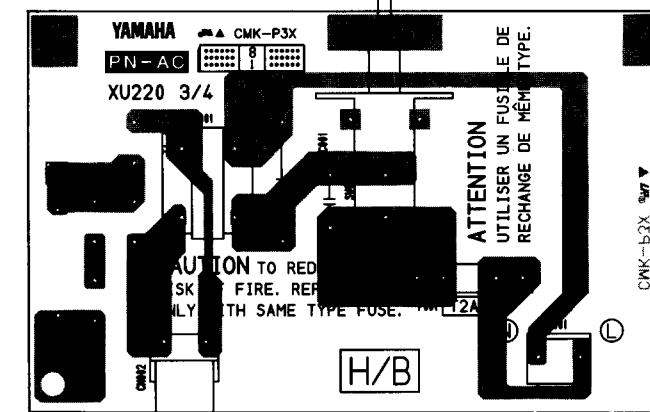
● Panel Layout (パネルレイアウト)



● PN-PN Circuit Board (European model)

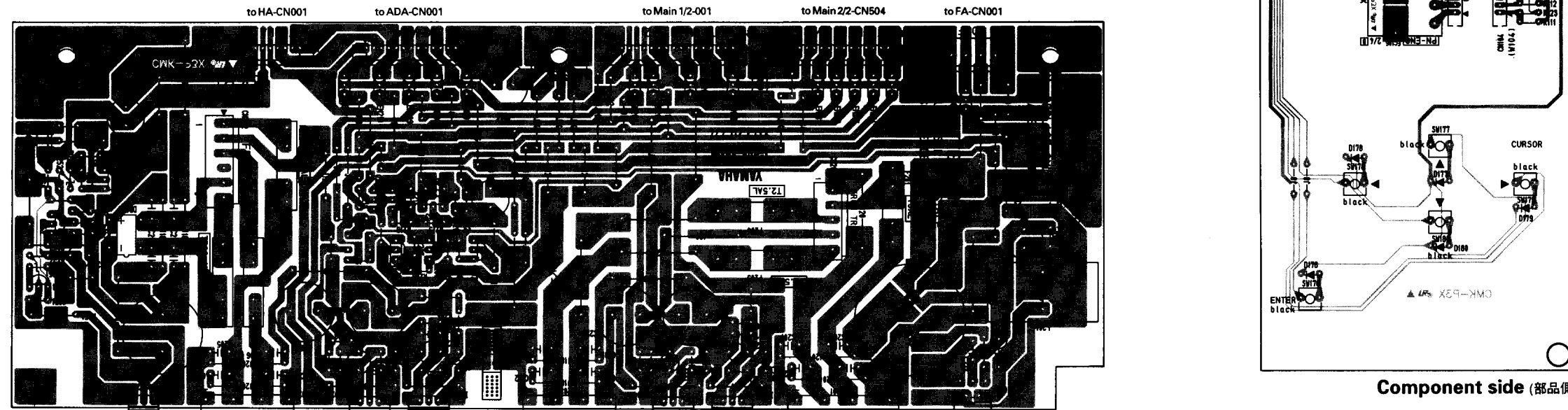


● PN-DC Circuit Board (European model)



Component side (部品側)

● PN-DC Circuit Board (Japanese, U.S and Canadian models)



Component side (部品側)

• HA Circuit Board

